



Dolphin Yachts

INTERNATIONAL YACHT BROKERS

Dolphin Yachts S.L.

Club de Mar

07015 Palma de Mallorca

Spain

info@dolphin-yachts.com



Sanlorenzo SL106

Hersteller:	Sanlorenzo	LüA:	32.20m (105'6")
Modell:	SL106	Breite:	7.05m (23'1")
Jahr:	2019	Tiefgang:	2.00m (6'6")
Rumpfmateri al:	GFK/Fiberglas	Treibstoff:	12.400 Litres
Räumlichkeiten:	10 berths in 5 cabins	Wasser:	2.800 Litres
Designer:	Builder	Motoren:	2 x 2434hp MTU
Verdrängung:	135 tons	Geschwindigkeit:	29 Knots

6.900.000 € MwSt nicht bezahlt



MOTOREN:

2 x 2434hp MTU 16V 2000 M96L

Motorstunden: 850 aprox.

GESCHWINDIGKEIT:

Maximal: 29 knots aprox.

Reise: 22 knots aprox.

FASSUNGSVERMÖGEN:

Treibstoff: 12400 Litres

Wasser: 2800 Litres

MECHANISCHE AUSTRÜSTUNG:

Zero speed CMC stabilizers with extra noise insulation

2 x Kohler 55Kw 400v Tri phase 50Hz generators 2500 hr.

Compressed air system with four connections: bow area, garage, engine room, flybridge.

Sewage Treatment System Tecnicoma Ecomar

Alfa laval fuel cleaning system

Oil change system for engines, generators and gearboxes.

Water maker 230 l/h

Water heaters 200L x 2

Fresh water softener system

Forced air conditioning in generators area

RÄUMLICHKEITEN:

Berths: 10

Cabins: 5

Head: 6

Crew Berths: 5

Crew Cabins: 3

Full beam master stateroom on the main deck forward with large private access, king-size walkaround bed, large forward and sides facing windows, sofa, hi-low TV mechanism, safe and ensuite bathroom plus additional extra Electric skylight with electric curtain and air purifier

Three queen-size guest staterooms on the lower deck with ensuite bathrooms (extra with No.4 rain showers)

One twin guest stateroom with ensuite bathroom (extra with No.4 rain showers)

Captain's cabin with queen berth and ensuite head

2 x Crew cabins with bunks and ensuite heads

Lounge with kitchenette

Settee with table for dining

Double washer and dryers located in crew area

INNENAUSSTATTUNG:

Air conditioning replaced 2022 with two compressors with separate chillers that can run in parallel.

3M Solar glass protection for master cabin and bridge 2023

Paola Lenti loose furniture on the flybridge (3 Cove sunbeds + 1 Smile armchair + 1 Smile pouf + 3

Frame side tables + 1 Cove sofa + 2 Cove platforms + 1 Shell pouf) - diff. With STD loose furniture

Wood floor parquet in the salon (diff. With STD carpet)

Central vacuum cleaner system

Extra air co outlet in day toilet

2 additional underfloor storage in the lower deck lobby

1 additional underfloor storage in the crew dinette + opening crew



1 convertible bed in the starboard side guest cabin
Opening system for the owner, vip and guest beds (4)
staircase
16 Floating staircase in the lower deck lobby (diff. With STD staircase)
Gold Audio Video Package
2 X Ice maker VITRIFRIGO IM CLASSI EXTERNAL REFILL (salon + fly bridge)
Fridge + freezer in crew area
Salon ceiling, lower deck lobby and guest staircase walls in leather
Touch screen alarm monitoring system in crew area
PABX telephone system
4g router

KOMBÜSE/WASCHKÜCHE:

Second big fridge in galley, same as standard
Extra small fridge
Food waste disposal
2 x Miele washing machines
2 X Miele tumble dryers

NAVIGATION:

Glendinning Cable Master CM8
Raymarine Diamond package (different from Silver standard configuration)
TV-Sat Antenna SEATEL TV80
Empty Radome SEATEL TV80

DECK:

Flybridge table with teak planking top with stainless steel edges, base in stainless steel (diff. With STD table)
Teak deck on flybridge with grey Sikaflex
Cockpit summer cover (only stern area)
Removable shower on the bathing platform
6 Underwater led lights
4 Bigger portholes 730x530 for Guest Cabins (2 Fixed and 2 Openable)
Fly bridge shower unit same as on bathing platform
Sun awning for aft fly bridge
Upgraded 2x140 mts 16mm chain plus 2x160kg anchors
Copilot furniture modified to store a BBQ (diff. With STD copilot furniture)
Boffi K2 bar cabinet (diff. With STD bar cabinet)
Modified bow sunbathing area with extension and glass holders (diff. With STD sofa and table)
2 tables in the cockpit with electric hi-low system and additional filler; top with teak planking and stainless steel edges (diff. With STD low table)
Additional undercounter freezer in the flybridge bar cabinet
Additional Kenyon Texan Grill in the custom made copilot furniture of the flybridge
Additional Teppan Yaki for the flybridge bar cabinet
Watertight socket in cockpit
Shower on fly deck

SICHERHEIT:

CCTV IP RAYMARINE: 2 fixed in cockpit, 3 fixed in engine room.
Night thermal camera
Special latest technology firefighting system for engine room NOVEC

BEIBOOTE/SPIELZEUG:

Williams sport jet 465 8 persons with Rotax 4-Tec 150 ECT - fully serviced 9/24 with 250hrs.



Bauer diving compressor
Two Sea bobs
Various water toys

ANMERKUNGEN DES MAKLERS:

Presenting, in our opinion, the finest **San Lorenzo SL106** currently on the market. One owner from new, this exceptional **SL106** was built under the careful supervision of her Captain and owner from the very beginning.

850 hours of private use only, equipped with the larger 55kW generators, an immaculate engine room, upgraded air conditioning fitted in 2022 and extra silent zero-speed stabilizers for unparalleled comfort.

Additional features include an Alfa Laval system, a convenient side balcony, and a 4.65m Williams tender. This Sanlorenzo 106 has been meticulously maintained by her dedicated Captain and crew since her launch.

A remarkable opportunity to own this SL106 for €7,450,000 ex VAT.

Dolphin Yachts are the exclusive central agents for the sale of this 2019 SanLorenzo 106.

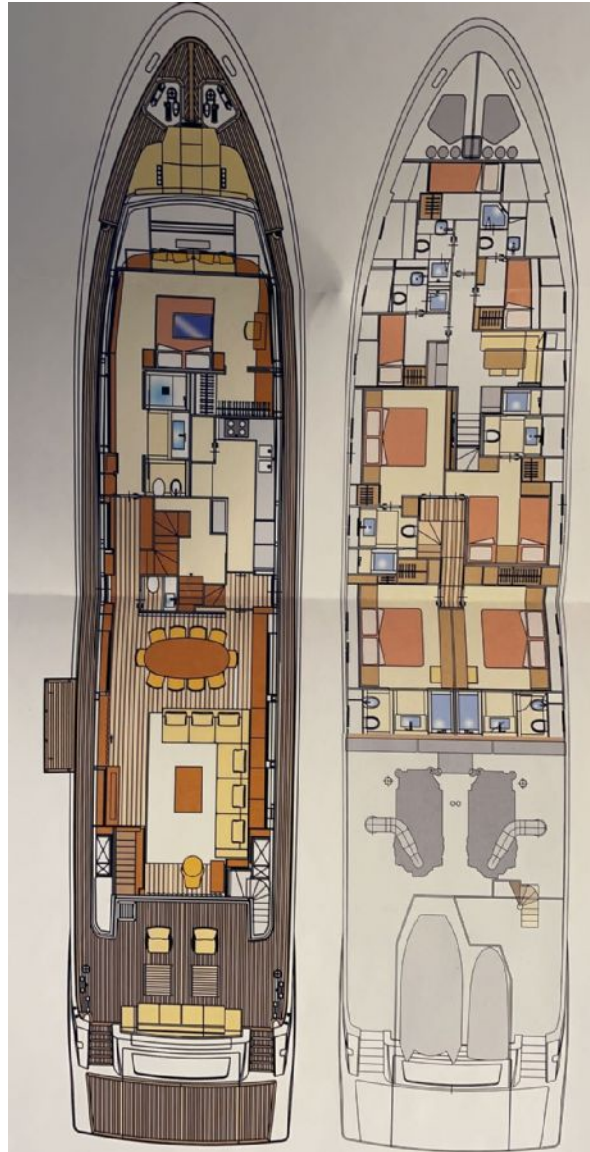
STANDORT:

Italy





Grundriss



Die Angaben in dieser Beschreibung werden als korrekt angenommen, ihre Exaktheit ist jedoch weder garantiert noch können sie als Vertragsbestandteil genutzt werden. Ein unabhängiges Gutachten ist immer empfehlenswert. Dieses Schiff wird angeboten unter Vorbehalt von Zwischenverkauf, Preisänderung oder Angebotsrücktritt ohne Mitteilung.