



Dolphin Yachts

INTERNATIONAL YACHT BROKERS

Dolphin Yachts S.L.

Club de Mar

07015 Palma de Mallorca

Spain

info@dolphin-yachts.com



Canados 90 Open

Builder:	Canados	LOA:	27.45m (90'1")
Model:	90 Open	Beam:	6.30m (20'7")
Year:	2010	Draft:	1.30m (4'3")
Construction:	GRP	Fuel:	7.500 Litres
Accommodation:	8 berths in 4 cabins	Water:	1.300 Litres
Designer:	Builder	Engines:	2 x 2400hp MTU
Displacement:	62000 kg	Speed:	40 Knots

1.390.000 € EU VAT paid



ENGINE:

2 x 2400hp MTU 16V2000M93

Engine Hours: 1100 aprox.

SPEED:

Top: 40 knots aprox.

Cruise: 36 knots aprox.

CAPACITIES:

Fuel: 7500 Litres

Water: 1300 Litres

MECHANICAL EQUIPMENT:

Seakeeper

Stern thruster

Bow thruster

Two Generators

Electric bilge pump

Manual bilge pump

Battery charger

Air compressor

Air conditioning

Heating

Hot water

Fresh water maker

Sea water pump

ACCOMMODATION:

Berths: 8

Cabins: 4

Head: 4

Crew Berths: 3

Crew Cabins: 2

Open plan salon

Fitted throughout in light oak

Full beam master cabin

Double VIP guest cabin

Two twin guest cabins

GALLEY/LAUNDRY:

Oven

Microwave oven

Dishwasher

Washing machine

Fridge

Freezer

NAVIGATION:

Depthsounder

Log-speedometer

Wind speed and direction

Repeater(s)

Navigation center

Plotter



Autopilot
Compass
GPS
VHF
Radar
Radar Detector
Computer

DECK:

Retractable deck salon roof
Teak decks
Hydraulic Passarelle
Davits
Electric anchor windlass
Radar reflector
Cockpit cushions
Cockpit table
Swimming ladder
Foredeck cushions

SAFETY:

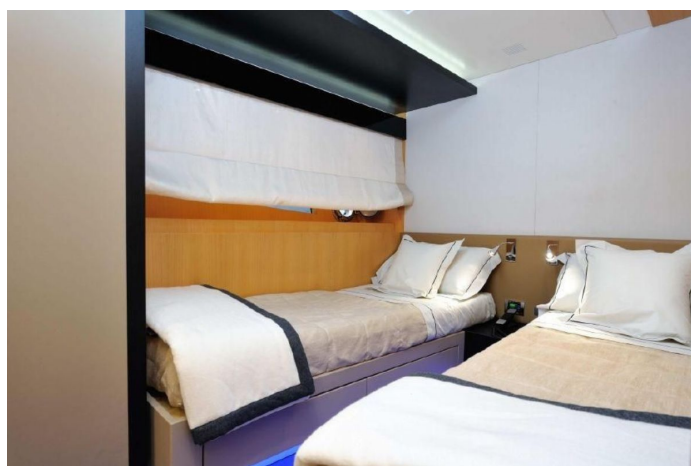
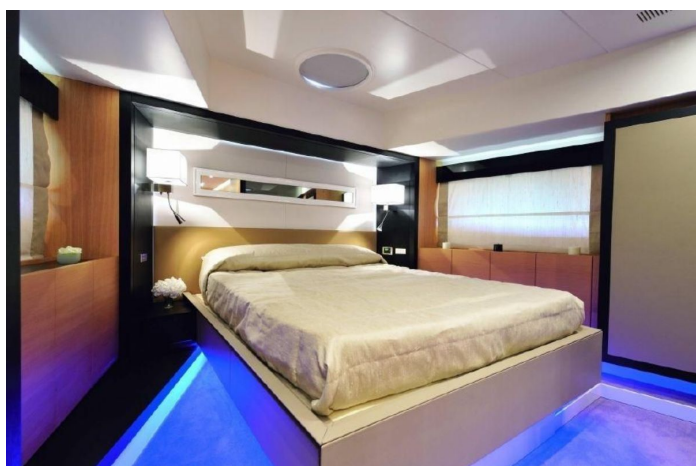
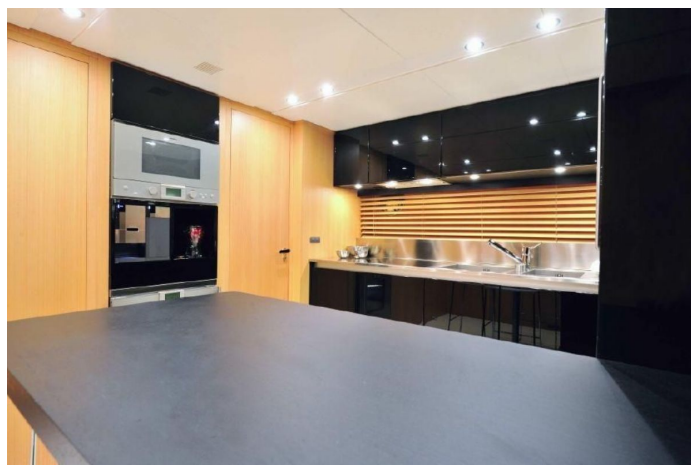
Liferaft

BROKERS COMMENTS:

This high performance Canados 90 sports yacht features low hours, a hard top, Arneson drives, zero-speed stabilizers, distinctive décor, and four double guest cabins. Her registered length is under 24m. Recently reduced in price.

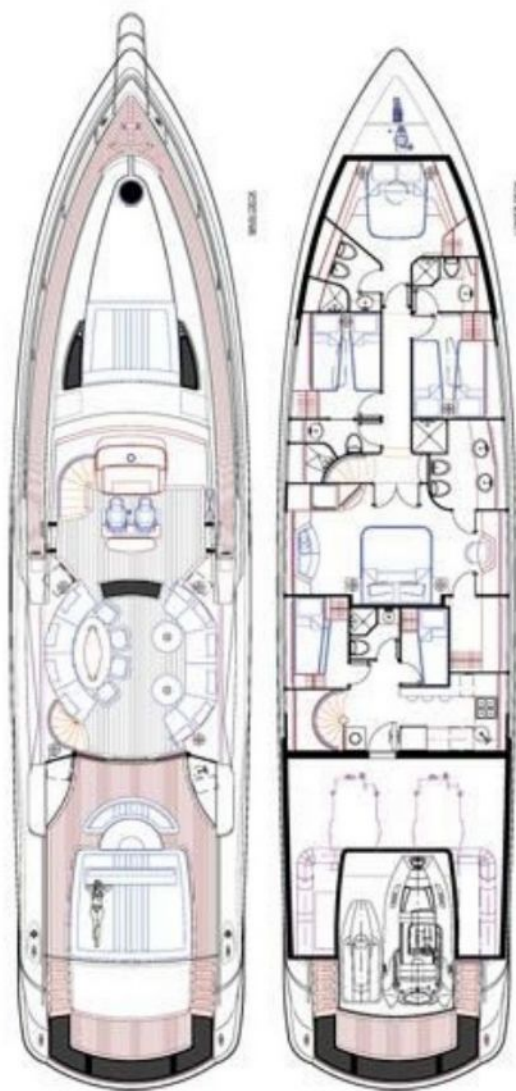
LYING:

Spain





Layout Plans



90' OPEN by CANADOS

The particulars presented in this brochure are based on information provided by the sellers and are believed to be correct, although we cannot be liable for any inaccuracy. A prospective buyer is strongly advised to check these particulars and where appropriate and at his own expense to employ a qualified marine surveyor and / or have an engine trial conducted which if conducted by us shall not imply any liability on our part.