



# Dolphin Yachts

INTERNATIONAL YACHT BROKERS

Dolphin Yachts S.L.

Club de Mar

07015 Palma de Mallorca

Spain

info@dolphin-yachts.com



## Jongert 2900 S

Производитель:	Jongert	Длина:	29.50m (96'8")
Модель:	2900 S	Ширина:	6.70m (22'0")
Год выпуска:	1991	Осадка:	4.20m (13'8")
Материал:	Сталь/Алюм	Топливо:	8.000 Litres
Размещение:	7 berths in 3 cabins	Вода:	3.000 Litres
Дизайнер:	Peter Sijm	Двигатели:	1 x 299hp Mercedes MTU
Водоизмещение:	103 tons	Киль:	Fin

990.000 € НДС уплачен



## Двигатели:

1 x 299hp Mercedes MTU OM 423 V10

Часы наработки: 10000 aprox.

## Скорость:

12 knots aprox.

## Вместимость:

Топливный бак: 8000 Litres

Бак пресной воды: 3000 Litres

Сточный бак: 2150

## Механическое оборудование:

Generators: MTU (2011)

Generator power: 62 kW / 84 hp

Generator: 2 type ONAN (2011)

Generator: 2 power 24 kW / 33 hp

Gearbox: TWINDISK 2.44;1

Bow thruster: HYDROMAR / 45 hp (33,3 kW) retractable and turn able

Water maker: HEM 25 high capacity water maker (4,500l/day) and HEINEN & HOPMAN hot water system

Fuel separator: 6 x RACOR filters

Air-conditioning: CLIMMA reverse cycle aircon (2011)

Waste water treatment: HAMANN

Voltage: 380 V / 220 V

Shore power converter: 380V/60A, 3-phase, 50 hz

Inverter: 3 x MASTERVOLT 24/1800 + ATLAS 24/3kW 220 V (2011)

Batteries: 2 x SONNENSCHIEIN 1000 Amp batteries

## Размещение:

Berths: 7

Cabins: 3

Head: 3

Crew Berths: 4

Crew Cabins: 2

The notably spacious open cockpit and closed deck salon offer unrestricted views over the length of the yacht. One of the most popular places on board for to stay and enjoy unrivalled cruising pleasures and evening entertaining

The enclosed deck salon features a comfortable seating area with a panoramic view. The design is exclusive but functional, the woodwork is flawless. A second steering position is found here, too, with first-class navigation and communication equipment



#### Master Stateroom

The elegant owner's suite is warm and inviting, with maple wood paneling and a private bathroom with bath and shower.

#### Guest Stateroom

The two guest cabins are light and airy, each with their own bathroom and an extra Pullman berth if required.

#### Crew Accommodation

Forward, with a separate entrance on deck, are two en-suite crew cabins, as well as a laundry room, a dinette and a professionally equipped galley.

#### Внутреннее оборудование:

TV/ DVD: SONY

Music system: SONY

#### Отопление:

Diesel

#### Кондиционер:

Reverse Cycle

#### Камбуз / Прачечное оборудование:

Refrigerator: 5 x TADEMA 400 I + 180 I

Freezer: 3 (1 x new 2010) TADEMA 360 I + 60 I

Oven: PANASONIC

Stove: MIELE

Microwave: PANASONIC

Icemaker: U LINE

Dishwasher: MIELE

Washing machine: MIELE

Dryer: MIELE

#### Навигационное оборудование:

Magnetic compass: B & G Fluxgate compass, SESTREL magnetic compass

Gyro compass: FURUNO GY 700

Log: B & G HYDRA 330

Depth sounder: B & G HYDRA 330

Autopilot: SEGATRON



Radar: FURUNO FR 1510 D, SIMRAD AP50

Electronic chart system: FURUNO GP 32

GPS: FURUNO GP 32

Instrumentation system

(wind speed & direction): B & G HYDRA 330

COMMUNICATION AND SATELLITE EQUIPMENT

Navtex: FURUNO NX 700

Broadband Internet FLEET 3/UMTS/WIFI Yachtspot

GSM: ERICSSON

SSB radio: SKANTI SSB 800 W

VHF: SKANTI

Mini M

Telephone exchange: KVH TRACPHONE 50

VHF handheld radio

Printer / fax: PANASONIC

**Оборудование палубы:**

Anchors & chain: 1 x CQR 300lbs anchor & 120 m chain 16 mm, 2 x 100 lbs anchor

Windlass: LEWMAR 6000

Passarelle: Folding: MULTIPLEX

Bathing ladder: 1 on platform, 1 on the side

Bimini top: Full sun awning, permanent Bimini over cockpit

**Рангоут и паруса:**

Rig: NAVTEC Rod Rigging

Masts: NIRVANA Aluminum

Boom/s: Hydraulic boom Vang

Spinnaker boom: Carbon Jockey Pole

Reefing system: Hydraulic rolling reefing

Sails by: Doyle and North Sails

Foresails: 228 sqm Genoa (2012)

Mainsails: 175 sqm (2012)



Stay: 79 sqm

Winches: LEWMAR hydraulic and manual

**Тендеры и водное снаряжение:**

Tenders: ZODIAC tender 2012, MERCURY 15 hp 4s

2012 and TOHATSU 10 hp 2 s

Toys: LASER sailing boat, kayak, folding bicycles

Dive equipment: Bauer Dive Compressor

**Комментарии брокера:**

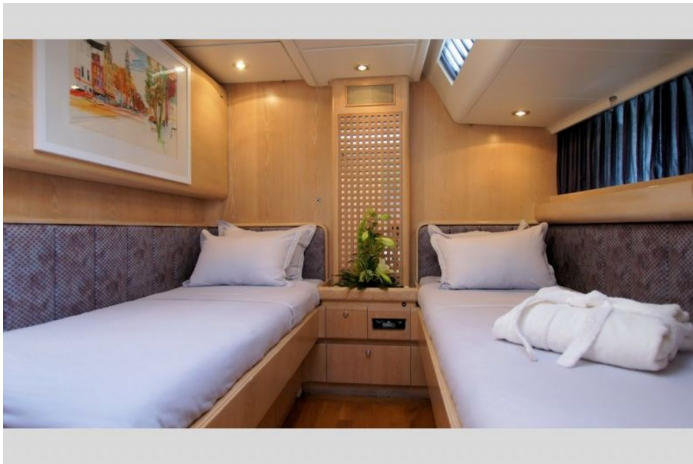
Strength, highest quality and performance make the Jongert 2900 series still one of the best yachts in the 30m range to go around the world.

Strong and reliable, this stylish performance Jongert 2900 has completed an Arctic and Antarctic circumnavigation. Overhauled in 2011 and 2015 - hull, superstructure, mast, boom and spinnaker-pole re-painted, interior varnished. Main engine, generator, bow thruster, steering, mast, furlers, hydraulics, aircon, appliances, and deck equipment completely serviced or replaced.

Stowaway mast, hydraulic furling system, hydraulic Lewmar winches all make her easy to handle by a small crew. Amazing Opportunity!!

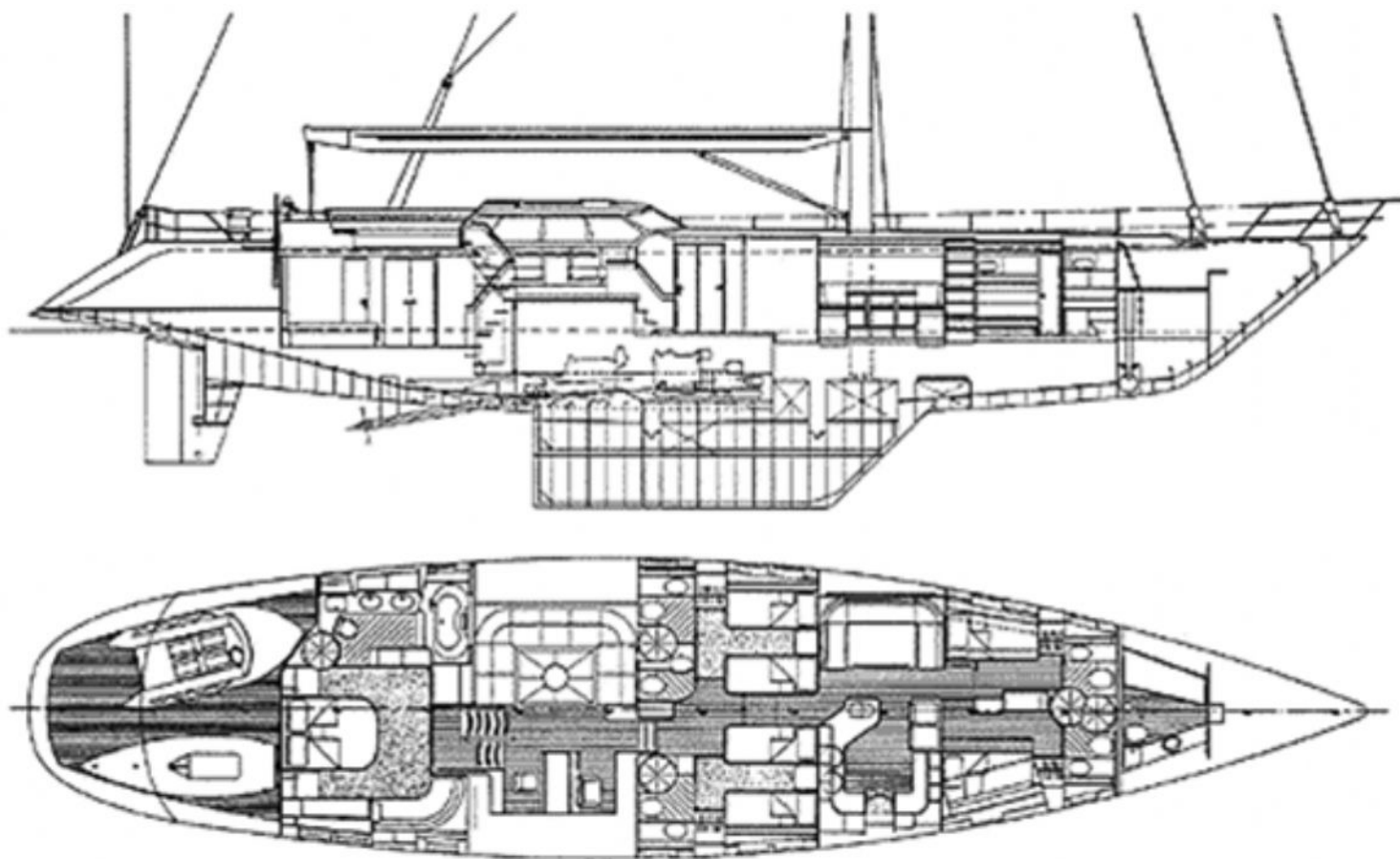
**Местонахождение:**

Spain





## Схема яхты



Все представленные выше данные основаны на информации, предоставленной продавцами. Данная информация считается достоверной, однако мы не несем ответственности за ее точность. Потенциальному покупателю настоятельно рекомендуется самостоятельно проверить предоставленную информацию и воспользоваться услугами квалифицированного морского эксперта и / или произвести проверку двигателей. В том случае, если проверка двигателей будет произведена нашей компанией, это не влечет никакой ответственности с нашей стороны.