



# Dolphin Yachts

INTERNATIONAL YACHT BROKERS

Dolphin Yachts S.L.

Club de Mar

07015 Palma de Mallorca

Spain

info@dolphin-yachts.com



## Cheoy Lee 55

Fabricant:	Cheoy Lee	Longueur hors tout:	16.76m (55'0")
Modèle:	55	Largeur:	5.06m (16'6")
Année:	1980	Tirant d'eau:	1.65m (5'4")
Matériau de la coque:	GRP	Carburant:	9.460 Litres
Aménagement:	6 berths in 3 cabins	Eau:	1.700 Litres
Architecte:	Charles Wittholz	Moteurs:	2 x 210hp Caterpillar
Déplacement:	36.288 kg	Vitesse:	12 Knots

£245,950 TVA exempté



**MOTEURS:**

2 x 210hp Caterpillar 3208 V8 Diesels

Nombre d'heures: 2000 aprox.

**VITESSE:**

Max: 12 knots aprox.

Croisière: 9 knots aprox.

**CAPACITÉ DES RESERVOIRS:**

Carburant: 9460 Litres

Eau: 1700 Litres

Eaux usées: Yes

**ÉQUIPEMENTS MÉCANIQUES:**

Stabilisers Vosper mini fin with oil cooler and Dowty constant velocity hydraulic pumps (overhauled 2007)

Stainless steel shafts and bronze propellers

Six Racor fuel filters

220-240V AC supplied from shore power line or diesel generators

Phillippi 50 Amp switch mode battery charger/shore support system

Two 24V Sterling switch mode battery chargers for bowthruster batteries

12V Sterling switch mode charger for engine start batteries

240V 12 & 48V control panel & breakers in main distribution panel in engine room with supplementary panels elsewhere in vessel

Two Raritan 240V hot water heaters/calorifiers

240V water pressure pump

12V water pressure pump

12V deckwash/fire pump

Four automatic bilge pumps

Double action Whale pump and manifold to all bilges

Black water 570ltr

Grey water 570ltr

Oil fired radiator type central heating system

*Machinery and engine room detailed description*

Non skid aluminum cheque plate sole, twin Caterpillar 3208 V8 normally aspirated Diesels giving 210hp at 2,500 rpm, fresh water cooled with twin disc reduction gears and standard alternators. Onan 6kW generator behind sound shield, Onan 12kW generator behind sound shield, Onan water cooled silencers to both units. Racor filters to each generator and main engine with spare unit to each engine, engine room ventilation blowers, automatic fire suppression system, two Raritan 240V water heaters, Clarke 240V 1hp fresh water pressure pump with accumulator tank and pressure gauge. 12V fresh water pressure system with accumulator tank and pressure gauge. Sea chest with electrically bonded valves for sea water cooling supplies to engines and generators. Fuel management system consisting of fuel shut off valves and fuel transfer system. Fire resistant GFRP wing fuel tanks each with two access manholes for cleaning and inspection. Underfloor day running tank with separate deck filler enabling tax free fuel to be used for generators and heating in various countries. Normally filled from wing tanks when day running. Two 110ah batteries for generator starting, two 110ah batteries for engine starting, two 110ah batteries used for domestics. Charging via main engine alternators via smart charger unit or dedicated 240V switch mode units. Four 150ah batteries forming 48V bank for sidepower bowthruster, with dedicated charging. All batteries in GFRP boxes. Battery selector switches for engines, generators and thruster. Domestic battery condition indicator on main panel with repeater in galley. Electrical control panel with 240V control breakers amp hour meters and board voltage. 12V breakers and battery management switches. Safety rail around engines, CCTV camera to pilothouse. Work bench with tool cabinet and tool rack above, small vice, 240V fluorescent lighting, 12V fluorescent emergency lighting, telephone to pilothouse.



## GÉNÉRATEURS:

12kW and 6kW Diesel Onan 240V

## AMÉNAGEMENT:

Berths: 6

Cabins: 3

Head: 3

Crew Berths: 3

Crew Cabins: 1

*Aft stateroom and bathroom* extend the full width of the vessel and forward for over 13 feet. Central queen size berth with storage under, two night lockers, two bed head reading lights, large double wardrobe electrically heated, writing desk with upholstered stool, ships telephone settee, six opening ports, shower, tiled countertop with hand basin, ITT electric w/c, exhaust fan, opening port. Smoke alarm and air conditioning unit.

*Forward guest stateroom* with V-berth which can form a commodious double when cushion infill used, drawers under, two lockers on forward bulkhead, wardrobe to port with escape hatch to forward deck over. Two reading lights, four opening ports, fluorescent ceiling light, smoke alarm, ships telephone, shower/head shared with starboard stateroom with lockable communicating door.

*Starboard guest stateroom* with double berth, drawer storage under, two reading lights on berth head, book storage area, telephone to pilothouse, wardrobe with drawer, door to shower/head shared with forward V stateroom. Fluorescent ceiling light and smoke alarm, telephone.

*Midship crew/children cabin* with two large single bunk berths, individual reading lights, two opening ports, telephone, double wardrobe, door to midship head/shower with manual ITT w/c.

*Main saloon* is accessed from the main deck through double sliding doors from the aft deck or a sliding door from the starboard deck. The decor is satin finished teakwood with cream leather reclining armchairs and a reclining matching settee. Drapes have a blue theme as does the central Chinese carpet. Overhead lighting is a mixture of highly energy efficient LED recessed units, central fluorescent/halogen units all independently switched, air conditioning unit to starboard, the valance lighting over the drapes is by hidden rope light. An Alpine stereo VHF and CD player is fitted as is a 32" LCD TV unit. Four 240V outlets, cocktail cabinet and drink storage, bookcase etc., staircase aft to master stateroom and staircase forward to engine room and accommodation lower deck. Smoke alarm.

*Pilothouse* can be accessed from either side deck or the saloon. The helm is central and has a truly commanding view, comprehensive instrumentation, a five camera CCTV system for close quarters maneuvering, a separate navigators station to port with chart stowage in drawer beneath. To rear of the house is another chart table with seating either side which can form a pilot berth. Overhead and floor red lighting, plus normal white light, 240V duplex sockets and 12V plug in socket for mobiles etc., telephone.

*Companionway* serving all lower forward deck, with fluorescent lighting, air conditioning unit, smoke alarm, fire extinguisher and carbon monoxide alarm.

## CHAUFFAGE:

Oil fired radiator type (2009)

## AIR CONDITIONNÉ:

Yes

## CARRÉ:

New galley (2007) with solid teak cupboards and all new appliances

Wallis stainless steel fan assisted diesel fired wall oven



240V microwave (inverter powered)  
240V fridge (inverter powered)  
Wallis ceramic hob (diesel powered)  
Bosch dishwasher  
Small custom built deep freeze 12V  
Filtered drinking water tap  
Electric extractor in stainless hood  
Considerable storage beneath solid Iroka worktops  
Domestic battery state indicator  
12V plug for mobiles etc.  
240V automatic washing machine with 240V drier vented overboard

**NAVIGATION:**

Decca compass on bridge  
Sestrel magnetic compass on flybridge  
Autohelm 7000 automatic pilot with dual controls  
Sailor VHF  
Nasa DSC VHF on flybridge with dedicated GPS and emergency power supply independent of ship DC supply  
Nasa DSC VHF in wheelhouse linked to Garmin GPS  
Nasa weather fax  
Navtex  
Depth indicator  
Speed log  
Wind speed indicator  
Raytheon fish finder  
Garmin 328 GPS  
Closed scan Raytheon radar with chart plotter  
Yeoman chart plotter linked to Garmin GPS  
Loud hailer with automatic fog warning  
Fiamma compressor driven air horns

**PONT:**

Neco 240V anchor windlass with chain cathead and rope capstan, with remote control  
50,8kg galvanised Bruce anchor with 34kg Admiralty pattern kedge  
40 fathoms 7/16th galvanised chain with bow roller and chafing gear  
Six stainless steel bollards  
1-1/4 stainless pulpit/bow rail  
Fiberglass bulwarks with teak capping rail  
12V LED lights over deck passageways  
Storage lockers forward of wheelhouse  
Bow seat  
Boarding gates port starboard and aft  
Passerelle  
Warps  
Fenders  
Boat hooks  
Navigation lights  
400kg electrically operated boom derrick on boat deck  
Hydraulic mast lowering equipment  
Jeckells steadying sail (new 2006, and as yet unused)  
Teak grating swim platform mounted on transom & accessed from the main deck by a stainless steel ladder  
Enclosed canopy to fit the fly bridge (2009)  
Bimini (2009)  
Aft canopy (2009)



## Winter covers

### *Flybridge detailed description*

Flybridge is accessed from the pilothouse, and covers approximately 2/3rds of the vessel. Engine starts and controls duplicated from wheelhouse as is GPS and autopilot, dedicated VHF, radar chart plotter station, custom stainless wheel, central helm seat with large seating/lounging area to starboard. The air conditioning unit is mounted aft of the seating area alongside a portable gas powered barbecue. There is a centrally mounted funnel which is now used for storage and the mounting for the mast which can be easily lowered by one person thanks to the magic of hydraulic power. The owner stores his small sailing dinghy and speed boat aft which still leaves a considerable space for sunbathing.

### SÉCURITÉ:

Fire extinguishers (2007)

Eight person automatically inflated life raft

Offshore pack flares

Continuous safety rail around decks

### CANOTS/JOUETS:

Zodiac 420 RIB with 35hp Mercury outboard and wheel steering

### HISTOIRE SERVICE ET CONSTRUCTION:

2003: refitted comprehensively including a new Sleipner sidepower 16hp 48V bowthruster, the below water equipment overhauled

2005: full osmosis treatment

2007: saloon refitted and refurnished, both the forward and aft staterooms refitted, new galley fitted at a cost of £8,500

Moulded GFRP hull, decks, pilothouse, stateroom sides and flybridge to Lloyds 100A1

Epoxy barrier coat below waterline with epoxy copper antifouling for greater protection and longevity

### COMMENTAIRE DU COURTIER:

\*\*\*\* **JUST REDUCED!** \*\*\*\*

**Cheoy Lee** are one of the world's great yacht builders and known for quality and integrity. Charles Wittholtz designed the hull of this **Cheoy Lee 55** on the lines of a north Pacific Salmon Fisherman and sister vessels have made voyages of considerable length. She is well designed, strong and is a low maintenance yacht which has enjoyed a regime of continuous planned refit with her current owner and is in first class order throughout - supplied with her past ten years maintenance records, lists of major equipment, serial numbers, handbooks and manufacture contact details. Originally built and fitted out to Lloyds 100A1 she has extensive tank capacity and transatlantic range. This vessel is an extremely comfortable *little ship*, you could live aboard permanently just as well as in a house ashore.

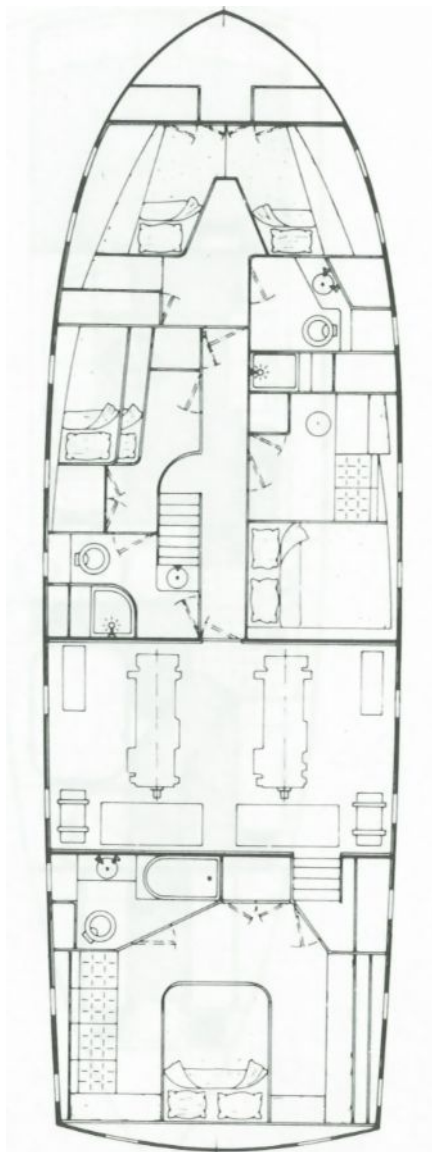
### EMPLACEMENT:

UK





## Distribution



Les informations présentées dans cette brochure sont probablement correctes mais leur exactitude n'est pas garantie et ne pourra pas être utilisée pour un contrat. Une expertise Independent est toujours recommandée. Ce bateau peut être retiré de la vente sans préavis.